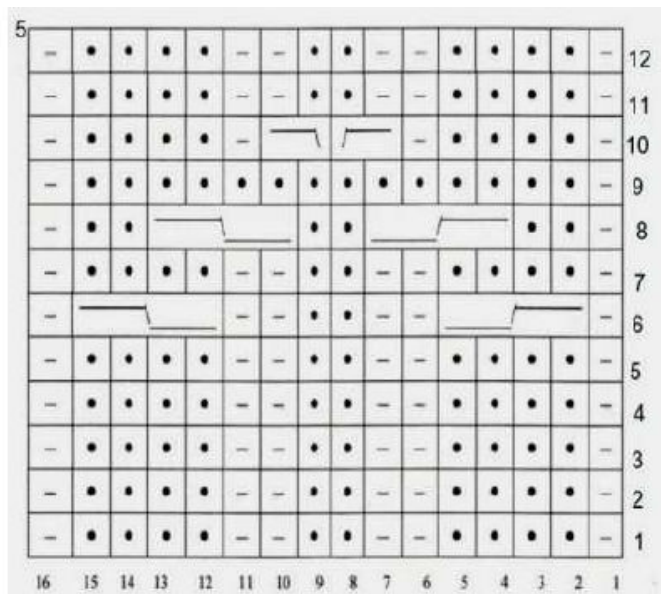


Orchyledra Socks

by Anja Nussbaumer



Abbreviation:

CN= Cable Needle

• = knit

- = purl

— / — = slip 2 stitches on CN and hold in front, knit 2 stitches, knit stitches from CN

— \ — = slip 2 stitches on CN and hold in back, knit 2 stitches, knit stitches from CN

— / — = slip 1 stitch on CN and hold in front, purl 1 stitch, knit stitch from CN

— \ — = slip 1 stitch on CN and hold in back, knit 1 stitch, purl stitch from CN